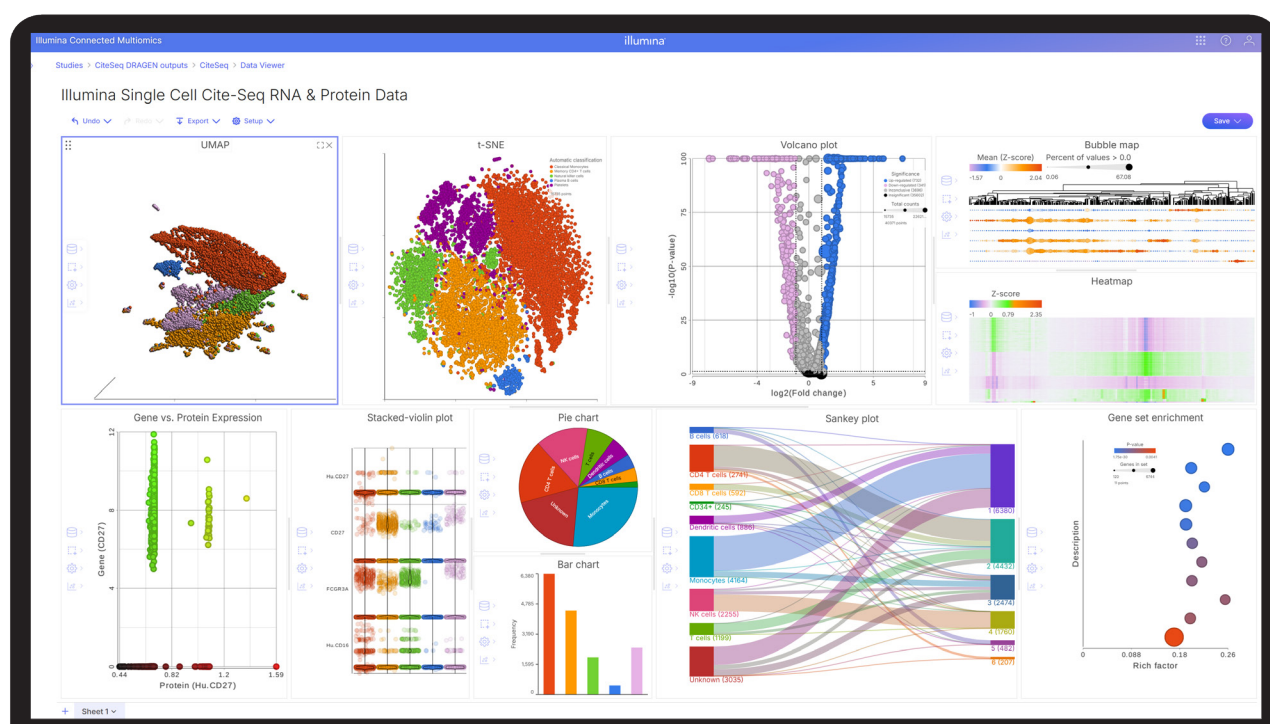


Illumina Connected Multiomics

Powerful, intuitive, scalable multiomic analysis

Proteomics | Transcriptomics | Epigenomics | Genomics | Bulk | Single-cell | Spatial



Illumina Connected Multiomics is a cloud-based software that empowers researchers to explore and analyze biological data at scale. Powerful, industry-standard statistical methods within an interactive graphical-user interface make complex data analysis accessible to all researchers, no matter your experience level. The platform offers ease-of-use and publication-ready visuals, without sacrificing analytical power.



Unlock deeper
biological insights



Intuitive and
streamlined analysis



Scale studies
with ease

Connected workflow

As part of the Illumina connected ecosystem, Connected Multiomics leverages the speed and accuracy of **DRAGEN™** secondary analysis and **Correlation Engine**, one of the world's largest omics knowledgebases, for integrated pathway analysis. Pre-built and customizable workflows for key Illumina multiomic assays provide an end-to-end solution that simplifies multiomic analysis. Read about the [assays supported](#).



Interactive visualizations

Information-rich and publication-ready visualizations



Powerful statistical algorithms

Robust statistical methods for identifying key features



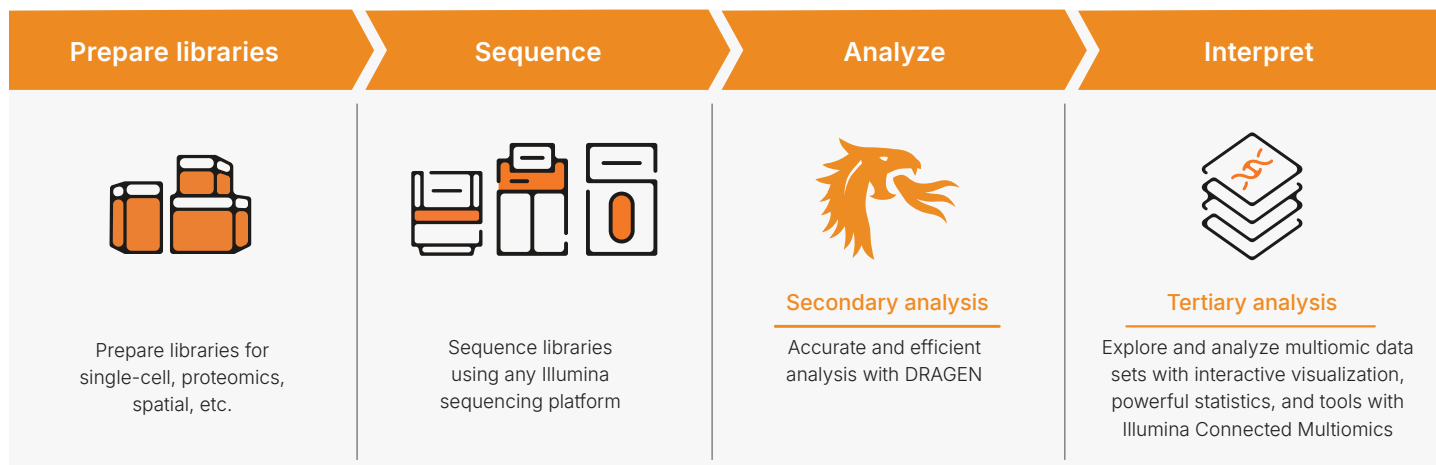
Data integration and streamlined workflows

Built to provide seamless multiomic workflows from assays to insights

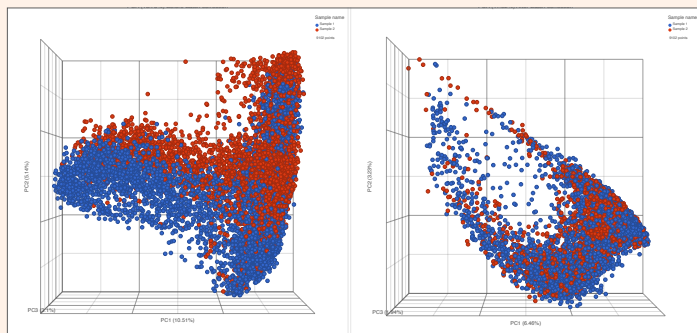


Security-first infrastructure

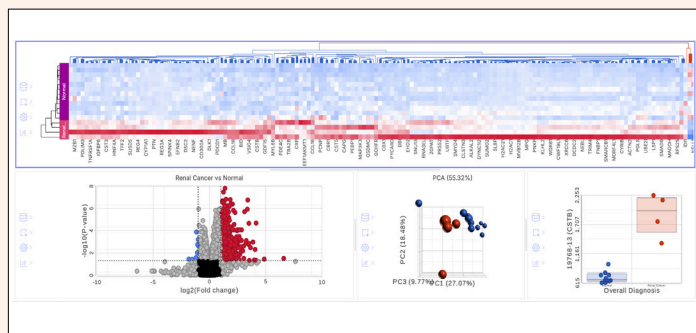
Built with industry-standard security, privacy, and compliance standards



Bring your studies to life with beautiful, interactive visualizations



PCA showing before and after batch effect correction. Correction can help mitigate batch effects.



Synchronized visualizations highlight features across plots.

